



# HA16 PX HA18 PX

## Optimal productivity

- Continuous 360° turntable rotation
- Full proportional controls and simultaneous boom functions
- Lifts to full height in 44 seconds

## Outstanding rough terrain driving features

- 4 wheel steer and 4 wheel drive mean greater manoeuvrability
- Hydraulic differential lock
- 40cm ground clearance

**9.15 metre outreach provides a large working envelope (HA16 PX)**



**Haulotte**   
GROUP

More than lifting



# HA16 PX / HA18 PX



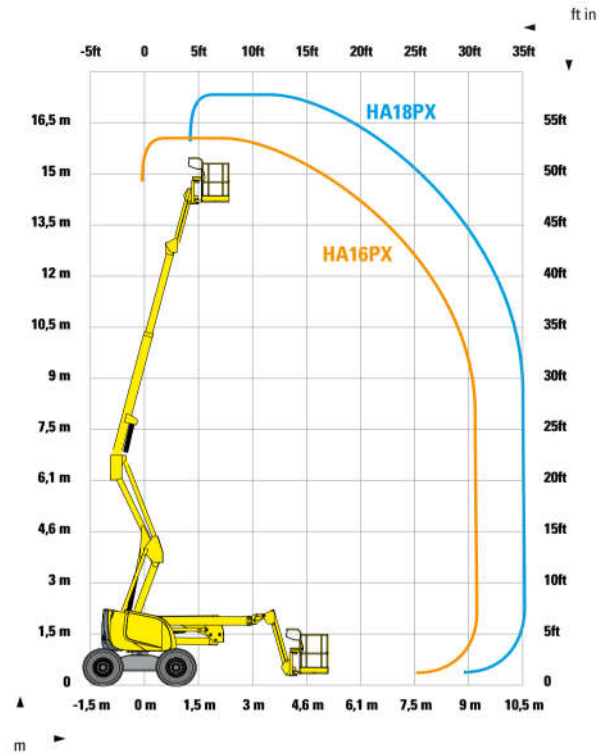
## ROUGH TERRAIN ARTICULATING BOOMS

### TECHNICAL DATA

#### HA16 PX

#### HA18 PX

|                            |                |                |
|----------------------------|----------------|----------------|
| Working height             | 16 m           | 17.3 m         |
| Platform height            | 14 m           | 15.3 m         |
| Horizontal outreach        | 9.15 m         | 10.6 m         |
| Up and over clearance      | 6.6 m          | 6.6 m          |
| Lift capacity              | 230 kg         | 230 kg         |
| <b>F x G</b> Platform size | 1.8 x 0.8 m    | 1.8 x 0.8 m    |
| <b>A</b> Length            | 6.95 m         | 7.6 m          |
| Transport length           | 5.25 m         | 5.9 m          |
| <b>B</b> Width             | 2.3 m          | 2.3 m          |
| <b>C</b> Height - stowed   | 2.3 m          | 2.3 m          |
| Transport height           | 2.6 m          | 2.6 m          |
| Vertical jib rotation      | 140° (+70/-70) | 140° (+70/-70) |
| Platform rotation          | 180° (+90/-90) | 180° (+90/-90) |
| Turntable rotation         | 360°           | 360°           |
| Tailswing                  | 0 m            | 0 m            |
| <b>D</b> Wheelbase         | 2 m            | 2 m            |
| <b>E</b> Ground clearance  | 40 cm          | 40 cm          |
| Tilt                       | 5°             | 5°             |
| Drive speed                | 0.8 - 5.5 km/h | 0.8 - 5.5 km/h |
| Gradeability               | 50 %           | 50 %           |
| Turning radius - outside   | 3.75 m         | 3.75 m         |
| Tires - foam-filled        | 385/65-22.5    | 385/65-22.5    |
| Power source               | 31 kW- 42 hp   | 31 kW- 42 hp   |
| Hydraulic system capacity  | 100 l          | 100 l          |
| Fuel tank capacity         | 72 l           | 72 l           |
| Weight                     | 6950 kg        | 8050 kg        |



### STANDARD EQUIPMENT

- 4 wheel drive and steer
- Continuous 360° turntable
- Safe to use in winds up to 60km/h
- Swing out engine tray for ease of maintenance
- 72 l fuel tank; 1.50 m filling height
- 5° tilt alarm
- 12 V battery / electrical control system
- Auxiliary power in the platform for emergency descent
- Brake release
- Hourmeter
- Mechanical turret slewing hook
- Towing hooks / lifting eyes

### OPTIONS AND ACCESSORIES

- 3.3 kW on-board generator
- Power to platform
- Large basket 2.3 x 0.80 m
- Travel alarm
- Rotating beacon
- Working light
- Catalytic exhaust
- Biodegradable hydraulic oil
- Cold Weather Package
- Warm environment kit
- Air line in platform

